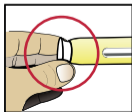
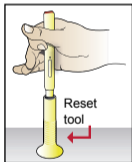


This reusable DEMO has been developed as an aid to help you with your patient training. The DEMO does not contain a needle or medicine but, on the other hand, it mimics the actual use of the SureClick®. The DEMO is ready for use and can be reactivated after each use by means of the supplied reset tool and by following the five simple steps stated on the instructions added to the packaging.

After using the DEMO

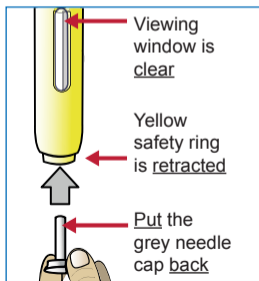
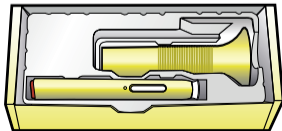
The DEMO must always be reactivated immediately after use by using the reset tool.

Please note: It is important that the grey needle cap is removed before placing the device in the reset tool.

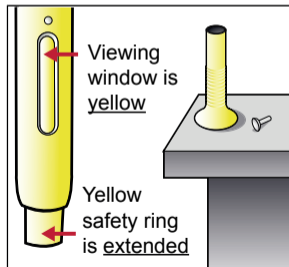


Storing the DEMO

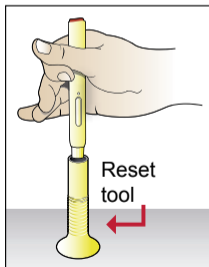
Reactivate and always put the grey needle cap back on the DEMO



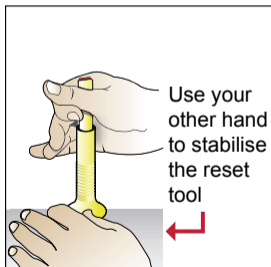
- 1** **Check** whether the DEMO is still in a used condition



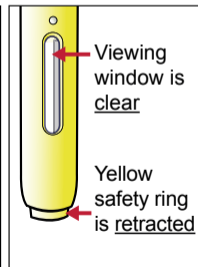
- 2** **Place** the DEMO above the reset tool



- 3** **Push** the device all the way down



- 4** **Check** if the DEMO is activated



- 5** **Put** the grey needle cap back and then put away the DEMO

